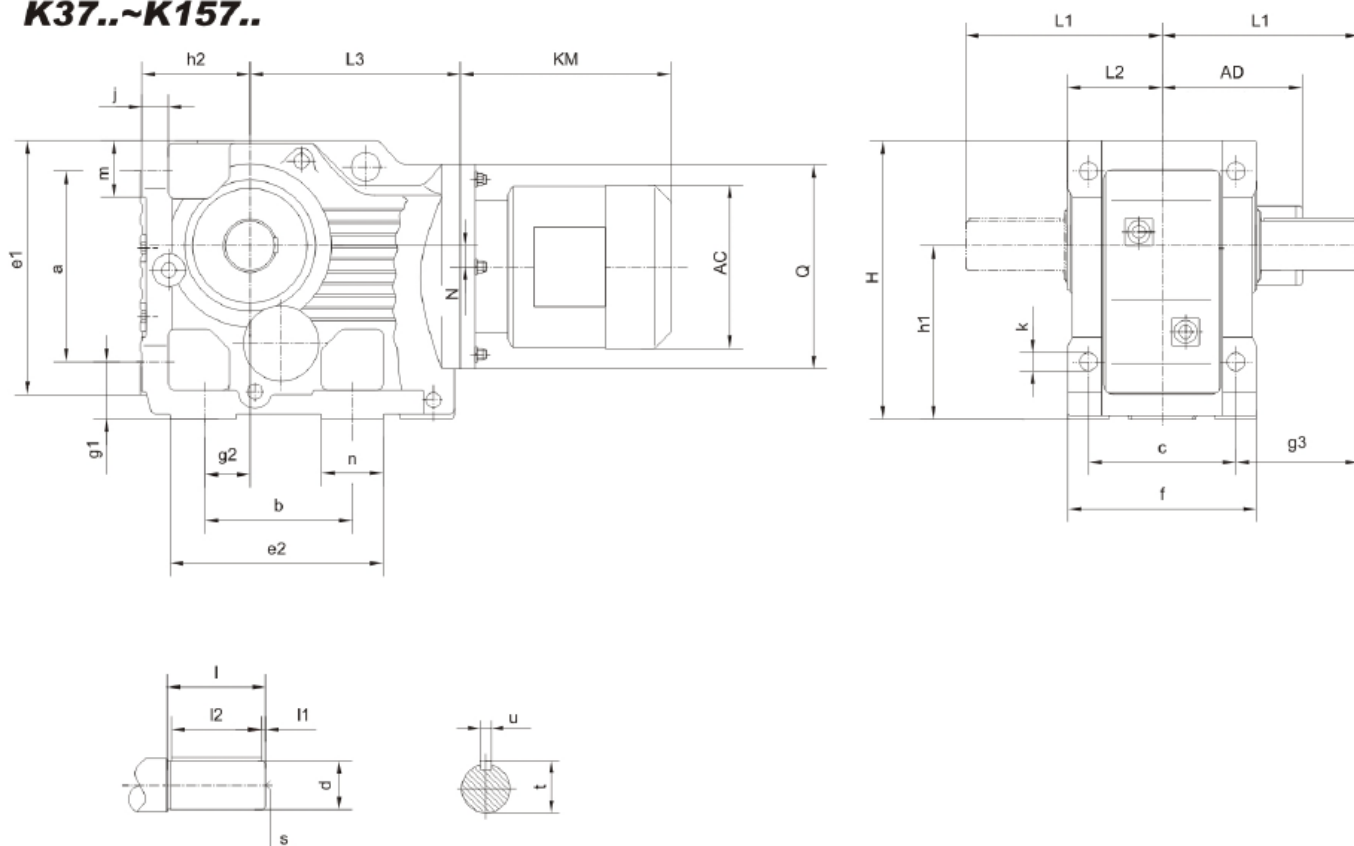
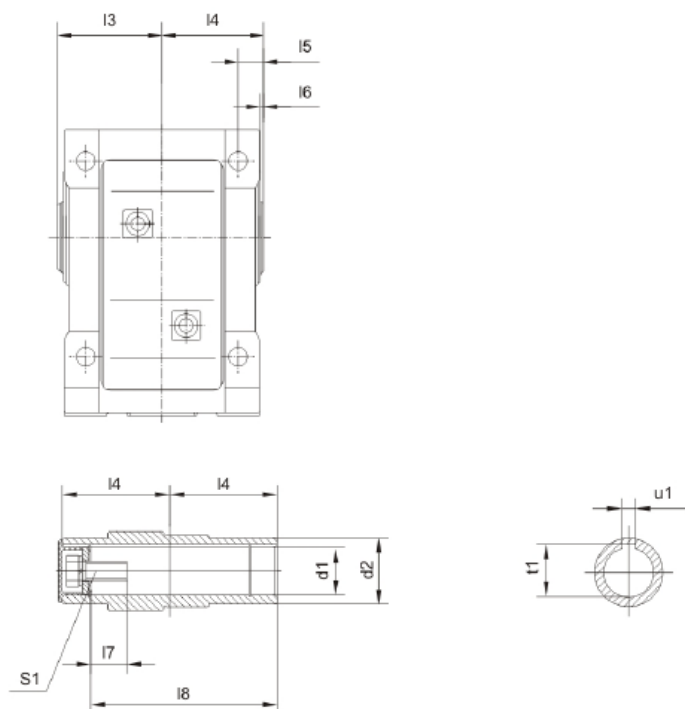


Габаритные размеры.

K37..~K157..



KA47B..~KA157B..

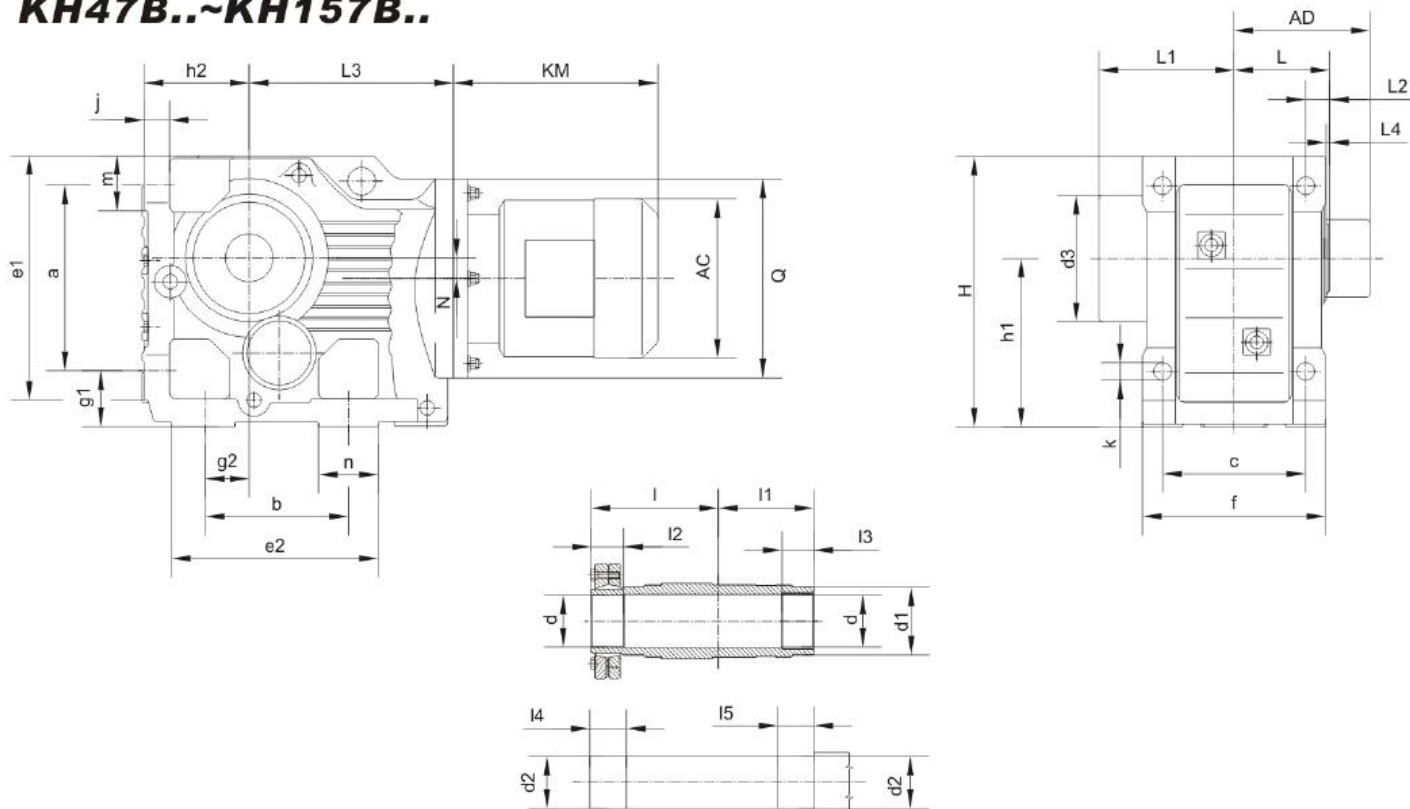


Коническо-цилиндрические мотор-редукторы серии К

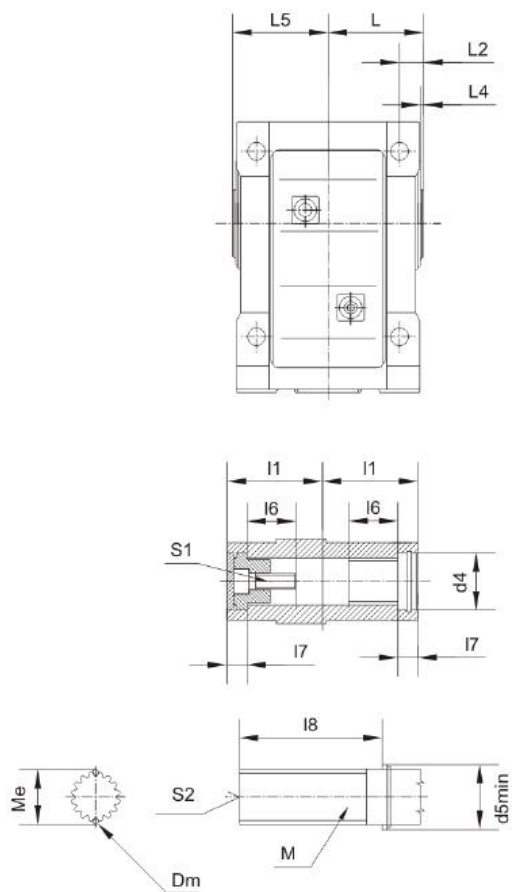
size	a b c	e1 e2 f	g1 g2 g3	h1 h2	j	k	m n	Shaft dimension				
								d	l	l1 l2	S	t u
K37..	115 110 100	150 143 120	32 28 60	100-0.5 63-0.5	16	11	37 38	25k6	50	5 40	M10	28 8
K47.. KA47B..	130 130 120	170 162 145	37 35 75	112-0.5 71-0.5	18	11	37 32	30k6	60	3.5 50	M10	33 8
K57.. KA57B..	150 130 130	190 172 157	45 30 88	132-0.5 80-0.5	21	13.5	43 40	35k6	70	7 56	M12	38 10
K67.. KA67B..	160 120 140	203 170 170	45 30 101	140-0.5 90-0.5	24	13.5	43 45	40k6	80	5 70	M16	43 12
K77.. KA77B..	200 150 165	263 208 200	55 40 123.5	180-0.5 112-0.5	27	17.5	55 55	50k6	100	10 80	M16	53.5 14
K87.. KA87B..	233 180 180	305 260 230	70 55 150	212-0.5 132-0.5	32	22	67 75	60m6	120	5 110	M20	64 18
K97.. KA97B..	295 240 240	372 294 290	75 75 171	265-1 160-0.5	36	26	82 60	70m6	140	7.5 125	M20	74.5 20
K107.. KA107B..	360 280 270	448 380 340	95 95 212	315-1 200-0.5	40	33	98 100	90m6	170	5 160	M24	95 25
K127.. KA127B..	420 350 330	526 440 400	110 115 253	375-1 225-0.5	45	39	111 100	110m6	210	15 180	M24	116 28
K157.. KA157B..	500 380 420	634 480 500	130 140 247	450-1 280-1	50	39	130 100	120m6	210	5 200	M24	127 32

size	hollow shaft dimention							H	L1 L2	L3	N	Q
	d1	d2	l3 l4	l5 l6	l7 l8	s1	t1 u1					
K37..	-	-	-	-	-	-	-	165	110 60	139	8.5	120
K47.. KA47B..	35 ^{H7}	50	78 75	15 3	22 132	M12x30	38.3 10	185	135 72	166	7.2	160
K57.. KA57B..	40 ^{H7}	55	86 83	18 3	29 142	M16x40	43.3 12	217	153 80	173	13.1	160
K67.. KA67B..	40 ^{H7}	55	93 90	20 3.5	29 156	M16x40	43.3 12	228	171 86.5	179	20	160
K77.. KA77B..	50 ^{H7}	70	108 105	22.5 4	32 183	M16x45	53.8 14	288	206 101	202	31.3	200
K87.. KA87B..	60 ^{H7}	85	123 120	30 4	36 210	M20x50	64.4 18	340	240 116	257	25.9	250
K97.. KA97B..	70 ^{H7}	95	153 150	30 4	34 270	M20x50	74.9 20	417	291 146	277	32.3	300
K107.. KA107B..	90 ^{H7}	118	178 175	40 2.5	40 313	M24x60	95.4 25	503	347 175	341	52	350
K127.. KA127B..	100 ^{H7}	135	208 205	40 2.5	38 373	M24x60	106.4 28	592	418 203	390	53	450
K157.. KA157B..	120 ^{H7}	155	253 250	40	36 460	M24x60	127.4 32	705	457 250	426	71.7	550

KH47B..~KH157B..



KV47B..~KV107B..

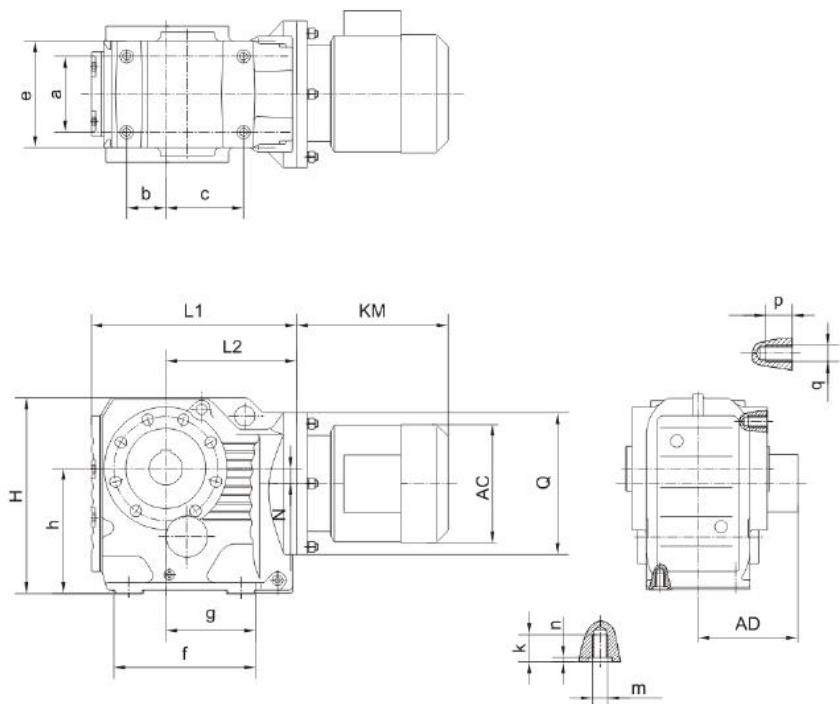


Коническо-цилиндрические мотор-редукторы серии К

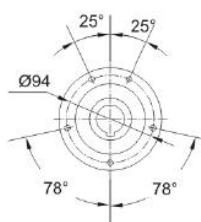
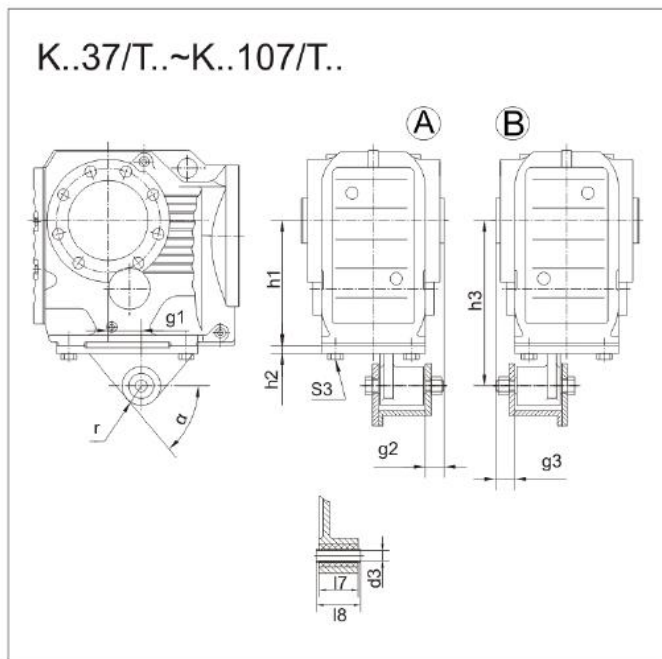
size	a b c	e ₁ e ₂ f	m n	g ₁ g ₂	h ₁ h ₂	j	k	L ₁ L ₅	L ₂ L ₄	hollow shaft dimention				
										l l ₁	l ₂ l ₃	l ₄ l ₅	d d ₁	d ₂
KH47B.. KV47B..	130 130 120	170 162 145	37 32	37 35	112 ^{-0.5} 71 ^{-0.5}	18	11	110 77	15 3	102 75	32 20	37 25	35H7 50	35h6
KH57B.. KV57B..	150 130 130	190 172 157	43 40	45 30	132 ^{-0.5} 80 ^{-0.5}	21	13.5	117 85	18 3	112 83	26 20	31 25	40H7 55	40h6
KH67B.. KV67B..	160 120 140	203 170 170	43 45	45 30	140 ^{-0.5} 90 ^{-0.5}	24	13.5	126 90	20 3.5	118 90	38 20	43 25	40H7 55	40h6
KH77B.. KV77B..	200 150 165	263 208 200	55 55	55 40	180 ^{-0.5} 112 ^{-0.5}	27	17.5	146 105	22.5 4	136 105	36 30	41 35	50H7 70	50h6
KH87B.. KV87B..	233 180 180	305 260 230	67 75	70 55	212 ^{-0.5} 132 ^{-0.5}	32	22	170 120	30 4	161 120	41 40	46 45	65H7 85	65h6
KH97B.. KV97B..	295 240 240	372 294 290	82 60	75 75	265 ⁻¹ 160 ^{-0.5}	36	26	206 150	30 4	195 150	55 50	60 55	75H7 95	75h6
KH107B.. KV107B..	360 280 270	448 380 340	98 100	95 95	315 ⁻¹ 200 ^{-0.5}	40	33	245 176	40 2.5	230 175	65 60	75 70	95H7 118	95h6
KH127B..	420 350 330	526 440 400	111 100	110 115	375 ⁻¹ 225 ^{-0.5}	45	39	296 /	40 2.5	280 205	85 70	95 80	105H7 135	105h6
KH157B..	500 380 420	634 480 500	130 100	130 140	450 ⁻¹ 280 ⁻¹	50	39	370 /	40 0	330 250	90 80	100 90	125H7 155	125h6

size	L ₃	d ₃	N	L	H	Q	hollow shaft dimention					
							l ₆ l ₇	l ₈	d ₄ d ₅	S ₁ S ₂	D _m M _e	M
KH47B.. KV47B..	166	83	7.2	75	185	160	32 18	115	37 ^{+0.1} 42	M10×30 M10	4 38.92 ^{-0.03}	35×2×30×16
KH57B.. KV57B..	173	83	13.1	83	217	160	32 18	130	37 ^{+0.1} 42	M10×30 M10	4 38.92 ^{-0.03}	35×2×30×16
KH67B.. KV67B..	179	93	20	90	228	160	42 25	130	47 ^{+0.1} 52	M16×50 M16	4 48.85 ^{-0.03}	45×2×30×21
KH77B.. KV77B..	202	114	31.3	105	288	200	52 23	160	55 ^{+0.1} 62	M16×50 M16	4 54.13 ^{-0.03}	50×2×30×24
KH87B.. KV87B..	257	159	25.9	120	340	250	62 25	180	72 ^{+0.1} 82	M20×60 M20	4 68.96 ^{-0.04}	65×2×30×31
KH97B.. KV97B..	277	174	32.3	150	417	300	72 25	240	72 ^{+0.1} 90	M20×60 M20	4 74.15 ^{-0.04}	70×2×30×34
KH107B.. KV107B..	341	200	52	175	503	350	89 26	290	90 ^{+0.1} 105	M20×60 M20	6 90.99 ^{-0.04}	85×3×30×27
KH127B..	390	233	53	205	592	450	/ /	/	/	/	/	/
KH157B..	426	315	71.7	250	705	550	/ /	/	/	/	/	/

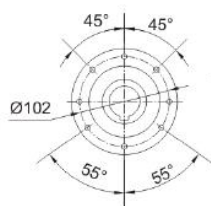
КА37..~КА107..



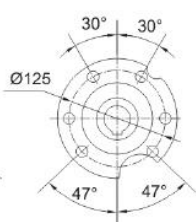
К..37/Т..~К..107/Т..



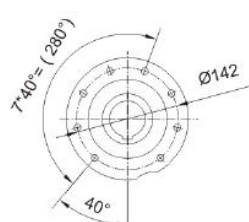
КА37..



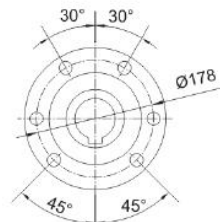
КА47..



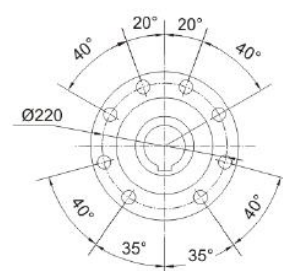
КА57..
КА67..



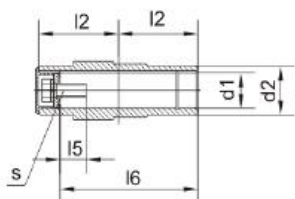
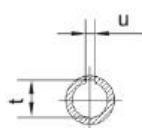
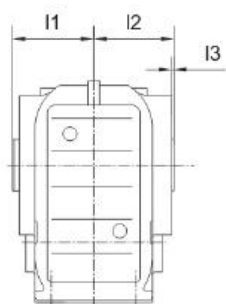
КА77..



КА87..



КА97..

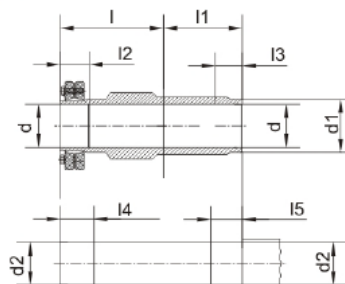
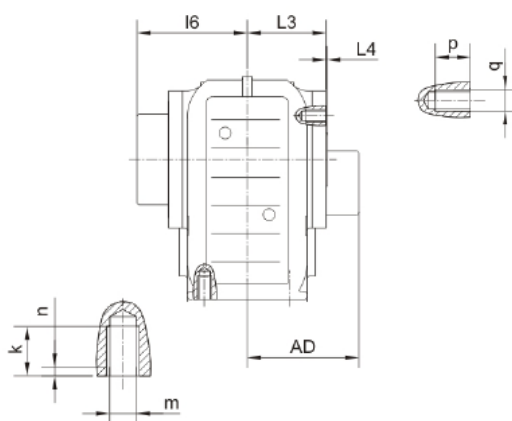
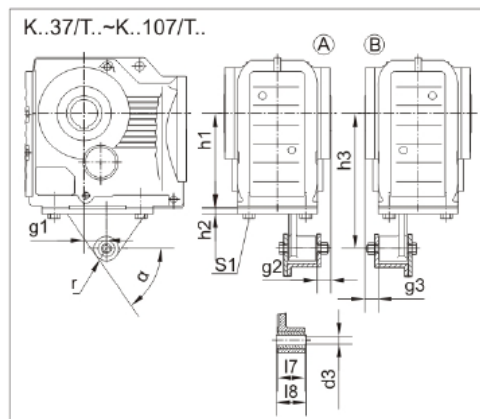
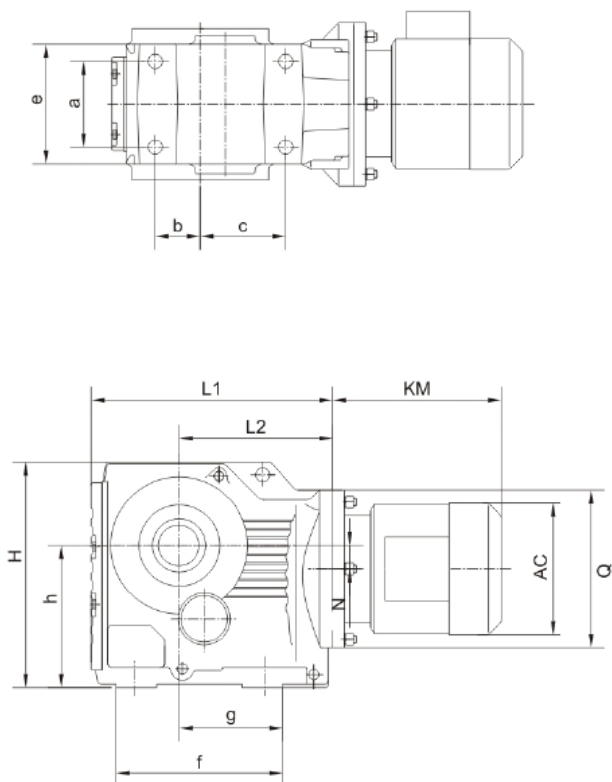


Коническо-цилиндрические мотор-редукторы серии К

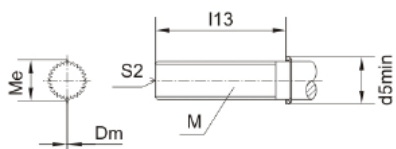
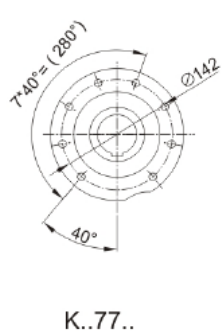
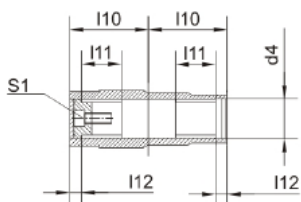
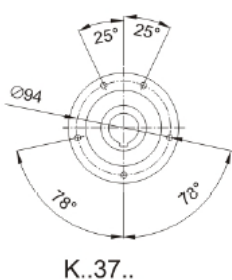
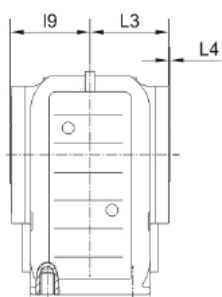


size	a b c	e f g	h	k m n	p q	Hollow shaft dimension				Torque arm form				H L ₁ L ₂	N Q
						d ₁ d ₂	l ₁ l ₂ l ₃	l ₄ l ₅ l ₆	s t u	g ₁ g ₂ g ₃	h ₁ h ₂ h ₃	d ₃ l ₇ l ₈	r s ₁ ∞		
KA 37.. K..37/T..	60	100	100-0.5	20	12 M8	30 ^{H7}	63	60	M10	23.5	100 ^{-0.5}	10.4 ^{+0.1}	22.5	164	8.5 120
	35	147		M10		60	17	33.3	20	10	31	M10x25	210		
	82	97		4		2.5	105	8	20	140 ^{+0.2} -0.7	36-0.3	60°	139		
KA 47.. K..47/T..	70	110	112-0.5	20	12 M8	35 ^{H7}	78	75	M12	30	112-0.5	10.4 ^{+0.1}	22.5	185	7.2 160
	40	170		M10		75	22	38.3	20	12	31	M12x30	243		
	100	115		4		3	132	10	20	160 ^{+0.2} -0.7	36-0.3	55°	166		
KA 57.. K..57/T..	88	122	132-0.5	25	20 M12	40 ^{H7}	86	83	M16	40	132-0.5	16.4 ^{+0.08}	29	215	13.1 160
	47	182		M12		83	29	43.3	18	13	54	M16x40	269		
	105	120		5		3	142	12	18	192 ^{+0.2} -0.7	60-0.3	55°	173		
KA 67.. K..67/T..	88	130	140-0.5	25	20 M12	40 ^{H7}	94	90	M16	45	140-0.5	16.4 ^{+0.08}	29	226	20 160
	42	182		M12		90	29	43.3	25	13	54	M16x40	274		
	110	125		5		3.5	156	12	25	200 ^{+0.2} -0.7	60-0.3	55°	179		
KA 77.. K..77/T..	102	154	180-0.5	32	20 M12	50 ^{H7}	108	105	M16	52.5	180-0.5	16.4 ^{+0.08}	29	286	31.3 200
	48	204		M16		105	32	53.8	25	14	54	M16x45	312		
	122	139		6		4	183	14	25	250 ^{+0.2} -0.7	60-0.3	60°	202		
KA 87.. K..87/T..	118	170	212-0.5	32	26 M16	60 ^{H7}	123	120	M20	60	212-0.5	25 ^{+0.08}	41	338	25.9 250
	65	280		M16		120	36	64.4	30	16	72	M20x50	390		
	160	190		6		4	210	18	30	300 ^{+0.2} -0.7	80-0.3	60°	257		
KA 97.. K..97/T..	160	226	265-1	36	26 M16	70 ^{H7}	153	150	M20	70	265-1	25 ^{+0.08}	41	414	32.3 300
	83	298		M20		150	34	74.9	40	17	92	M20x50	435		
	165	190		6		4	270	20	40	350 ^{+0.2} -1.2	100-0.3	50°	277		
KA 107.. K..107/T..	190	266	315-1	44	- - -	90 ^{H7}	178	175	M24	74	315-1	25 ^{+0.08}	41	500	52 350
	100	370		M24		175	40	95.4	45	20	92	M24x60	537		
	190	230		8		2.5	313	25	45	450 ^{+0.5} -1.5	100-0.3	55°	341		

КН37..~КН107..



КV37..~КV107..



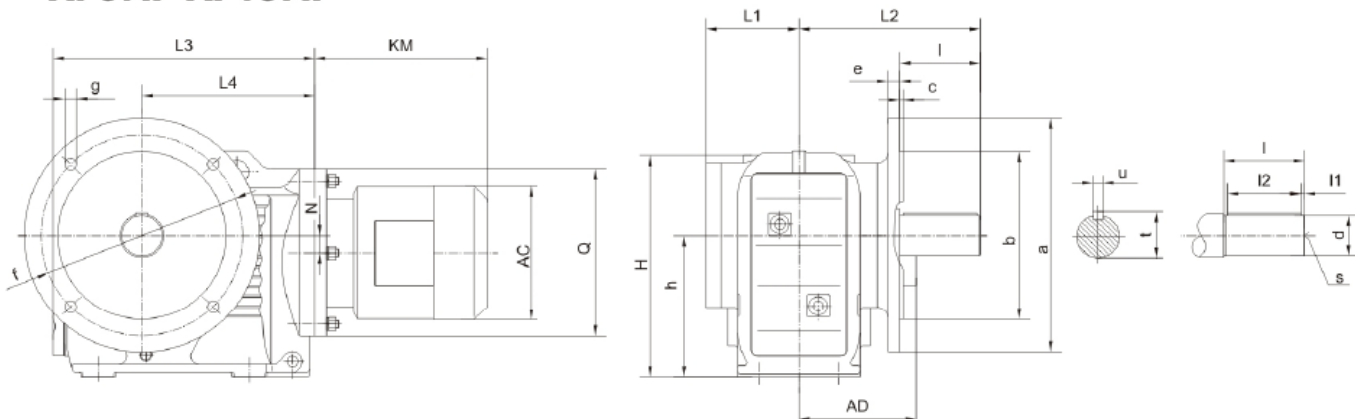
Коническо-цилиндрические мотор-редукторы серии К



size	a b c	e f g	H L ₁ L ₂	h N Q	k m n	p q	L ₃ L ₄	hollow shaft dimention				
								l l ₁	l ₂ l ₃	l ₄ l ₅	d d ₁	d ₂
KH37.. KV37..	60 35 82	100 147 97	164 210 139	100 ^{-0.5} 8.5 120	20 M10 4	12 M8	60 2.5	86 60	31 20	36 25	30H7 45	30h6
KH47.. KV47..	70 40 100	110 170 115	185 243 166	112 ^{-0.5} 7.2 160	20 M10 4	12 M8	75 3	102 75	32 20	37 25	35H7 50	35h6
KH57.. KV57..	88 47 105	122 182 120	215 269 173	132 ^{-0.5} 13.1 160	25 M12 5	20 M12	83 3	112 83	26 20	31 25	40H7 55	40h6
KH67.. KV67..	88 42 110	130 182 125	226 274 179	140 ^{-0.5} 20 160	25 M12 5	20 M12	90 3.5	118 90	38 20	43 25	40H7 55	40h6
KH77.. KV77..	102 48 122	154 204 139	286 312 202	180 ^{-0.5} 31.3 200	32 M16 6	20 M12	105 4	136 105	36 30	41 35	50H7 70	50h6
KH87.. KV87..	118 65 160	170 280 190	338 390 257	212 ^{-0.5} 25.9 250	32 M16 6	26 M16	120 4	161 120	41 40	46 45	65H7 85	65h6
KH97.. KV97..	160 83 165	226 298 190	414 435 277	265 ⁻¹ 32.3 300	36 M20 6	26 M16	150 4	195 150	55 50	60 55	75H7 95	75h6
KH107.. KV107..	190 100 190	266 370 230	500 537 341	315 ⁻¹ 52 350	44 M24 8	/ /	175 2.5	230 175	65 60	75 70	95H7 118	95h6

size	l ₆ l ₉	hollow shaft dimention					M	h ₁ h ₂ h ₃	g ₁ g ₂ g ₃	l ₇ l ₈ d ₃	r α s
		l ₁₀ l ₁₁	l ₁₂ l ₁₃	d ₄ d ₅	D _m M _e	S ₁ S ₂					
KH37.. KV37..	95 62	60 25	18 85	37 ^{+0.1} 42	2.75 33.03 ^{-0.03}	M10×30 M10	30×1.25×30×22	100 ^{-0.5} 10 140 ^{+0.2} -0.7	23.5 20 20	31 36 ^{-0.3} 10.4 ^{±0.1}	22.5 60° M10×25
KH47.. KV47..	110 77	75 32	18 115	37 ^{+0.1} 42	4 38.92 ^{-0.03}	M10×30 M10	35×2×30×16	112 ^{-0.5} 12 160 ^{+0.2} -0.7	30 20 20	31 36 ^{-0.3} 10.4 ^{±0.1}	22.5 55° M10×30
KH57.. KV57..	117 85	83 32	18 130	37 ^{+0.1} 42	4 38.92 ^{-0.03}	M10×30 M10	35×2×30×16	132 ^{-0.5} 13 192 ^{+0.2} -0.7	40 18 18	54 60 ^{-0.3} 16.4 ^{±0.08}	29 55° M12×35
KH67.. KV67..	126 90	90 42	25 130	47 ^{+0.1} 52	4 48.85 ^{-0.03}	M16×50 M16	45×2×30×21	140 ^{-0.5} 13 200 ^{+0.2} -0.7	45 25 25	54 60 ^{-0.3} 16.4 ^{±0.08}	29 55° M12×35
KH77.. KV77..	146 105	105 52	23 160	55 ^{+0.1} 62	4 54.13 ^{-0.03}	M16×50 M16	50×2×30×24	180 ^{-0.5} 14 250 ^{+0.2} -0.7	52.5 25 25	54 60 ^{-0.3} 16.4 ^{±0.08}	29 60° M16×40
KH87.. KV87..	170 120	120 62	25 180	72 ^{+0.1} 82	4 68.96 ^{-0.04}	M20×60 M20	65×2×30×31	212 ^{-0.5} 16 300 ^{+0.2} -0.7	60 30 30	72 80 ^{-0.3} 25 ^{±0.08}	41 60° M16×45
KH97.. KV97..	206 150	150 72	25 240	72 ^{+0.1} 90	4 74.15 ^{-0.04}	M20×60 M20	70×2×30×34	265 ⁻¹ 17 350 ^{+0.2} -1.2	70 40 40	92 100 ^{-0.3} 25 ^{±0.08}	41 50° M20×50
KH107.. KV107..	245 178	175 89	26 290	90 ^{+0.1} 105	6 90.99 ^{-0.04}	M20×60 M20	85×3×30×27	315 ⁻¹ 20 450 ^{+0.2} -1.5	74 45 45	92 100 ^{-0.3} 25 ^{±0.08}	41 55° M24×60

KF37..~KF157..



KAF37..~KAF157..

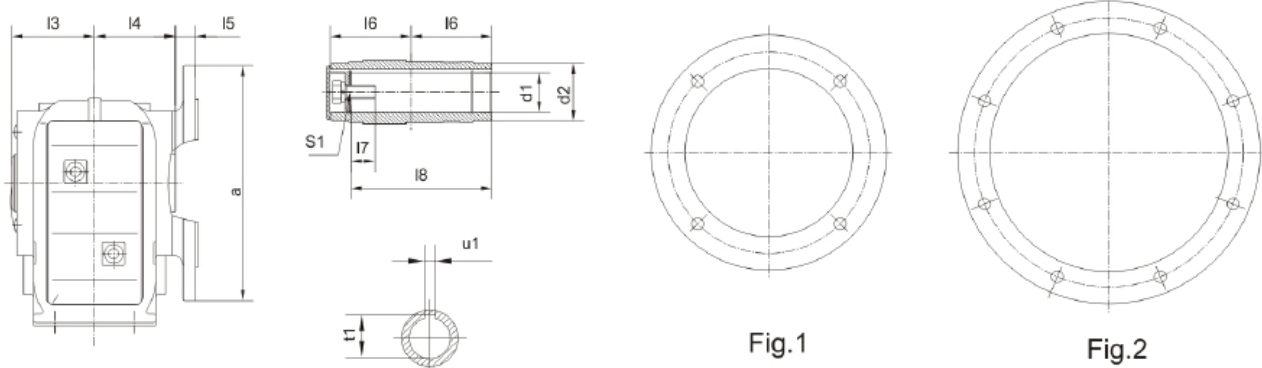
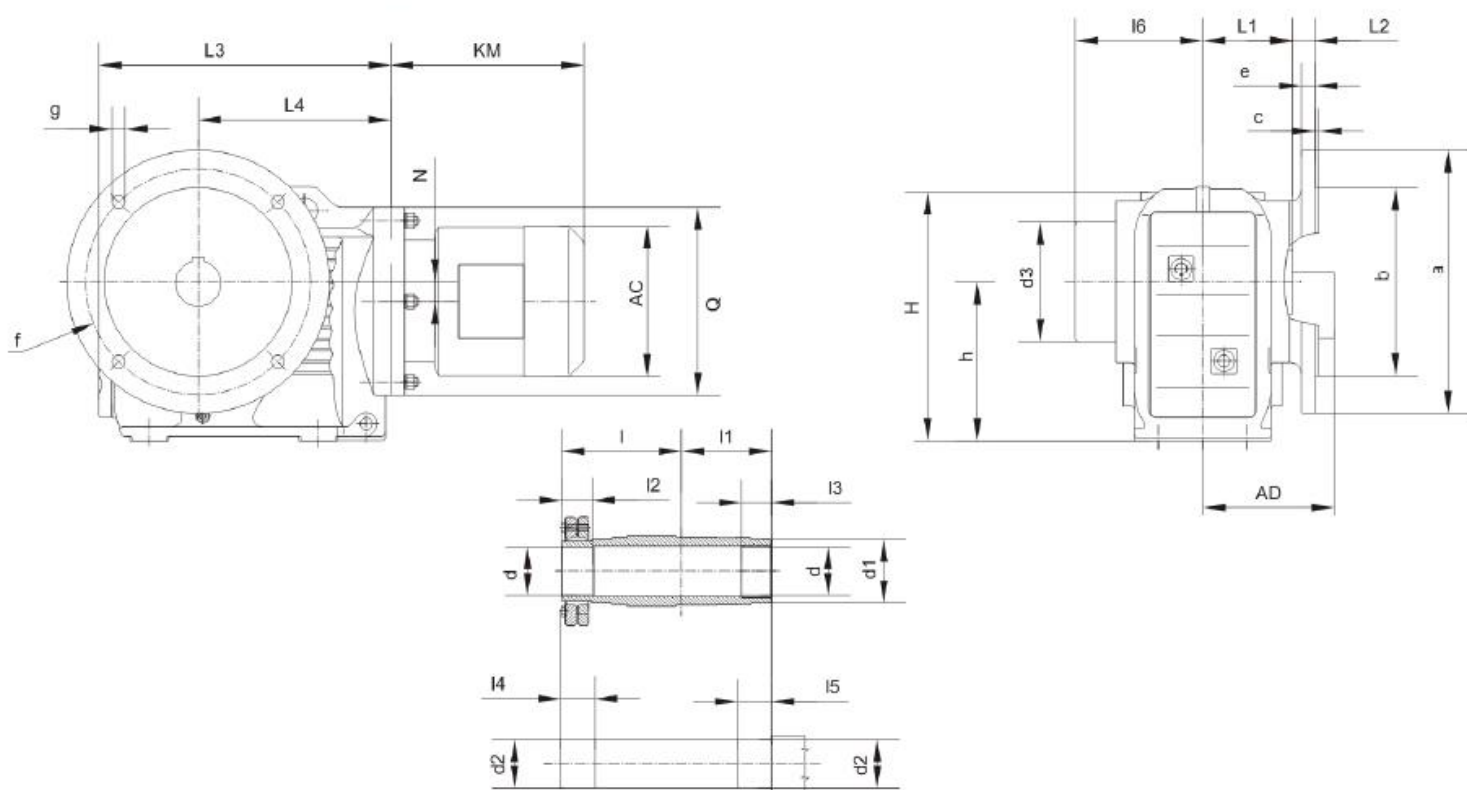


Fig.1

Fig.2

Model	Flange form	a b	c e	f g h	Shaft dimension				HollowShaft dimension				H	L1 L2 L3	L4 N Q		
					d l	l1 l2	S	t u	d1 d2	l3 l4 l5	l6 l7 l8	S1				t1 u1	
KF37.. KAF37..	Fig.1	160	3.5	130	25k6	5	M10	28	30 ^{H7}	63	60	60	M10 × 25	33.3	164	57.5	139
		110j6	10	100	50	40	8	45	24	105	17	8		134		8.5	
		210	120	72	166												
KF47.. KAF47..	Fig.1	200	3.5	165	30k6	3.5	M10	33	35 ^{H7}	78	75	75	M12 × 30	38.3	185	72	166
		130j6	10	112	60	50	8	50	25	132	22	10		160		7.2	
		243	160	243	160												
KF57.. KAF57..	Fig.1	250	4	215	35k6	7	M12	38	40 ^{H7}	86	83	83	M16 × 40	43.3	215	80	173
		180j6	15	132	70	56	10	55	23.5	142	29	12		177		13.1	
		269	160	269	160												
KF67.. KAF67..	Fig.1	250	4	215	40k6	5	M16	43	40 ^{H7}	94	90	90	M16 × 40	43.3	226	86.5	179
		180j6	15	140	80	70	12	55	23	156	29	12		193		20	
		274	160	274	160												
KF77.. KAF77..	Fig.1	300	4	265	50k6	80	M16	53.5	50 ^{H7}	108	105	105	M16 × 45	53.8	286	101	202
		230j6	16	132	100	10	14	70	37	183	32	14		242		31.3	
		312	200	312	200												
KF87.. KAF87..	Fig.1	350	5	300	60m6	5	M20	64	60 ^{H7}	123	120	120	M20 × 50	64.4	338	138	257
		250h6	18	212	120	110	18	85	30	210	36	18		270		25.9	
		390	250	390	250												
KF97.. KAF97..	Fig.2	450	5	400	70m6	7.5	M20	74.5	70 ^{H7}	153	150	150	M20 × 50	74.9	414	171	277
		350h6	22	265	140	125	20	95	41.5	270	34	20		332		32.3	
		435	300	435	300												
KF107.. KAF107..	Fig.2	450	5	400	90m6	5	M24	95	90 ^{H7}	178	175	175	M24 × 60	95.4	500	175	341
		350h6	25	315	170	160	25	118	41	313	40	25		386		52	
		537	350	537	350												
KF127.. KAF127..	Fig.2	550	5	500	110m6	15	M24	116	100 ^{H7}	208	205	205	M24 × 60	106.4	592	203	390
		450h6	22	375-1	210	180	28	135	51	373	38	28		466		53	
		615	450	615	450												
KF157.. KAF157..	Fig.2	660	6	600	120m6	5	M24	127	120 ^{H7}	253	250	250	M24 × 60	127.4	705	253	705
		550h6	28	450-1	210	200	32	155	60	460	36	32		520		71.7	
		706	550	706	550												

KHF37..~KHF107..



KVF37..~KVF107..

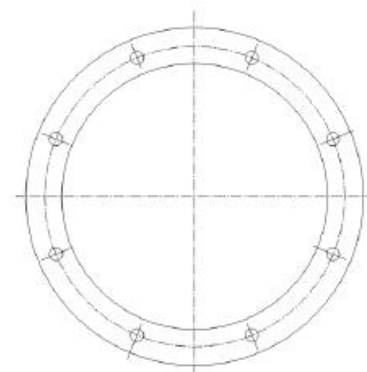
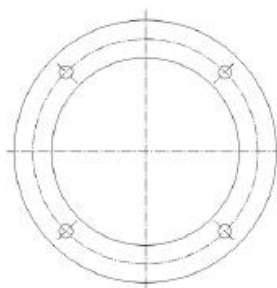
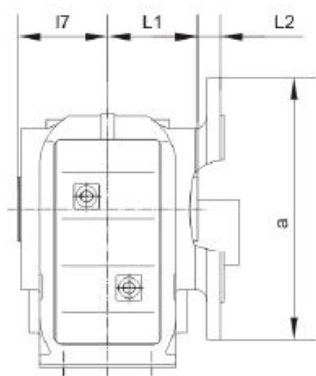
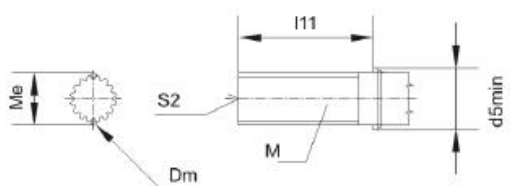
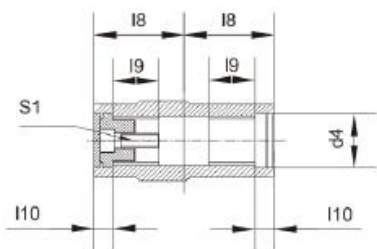
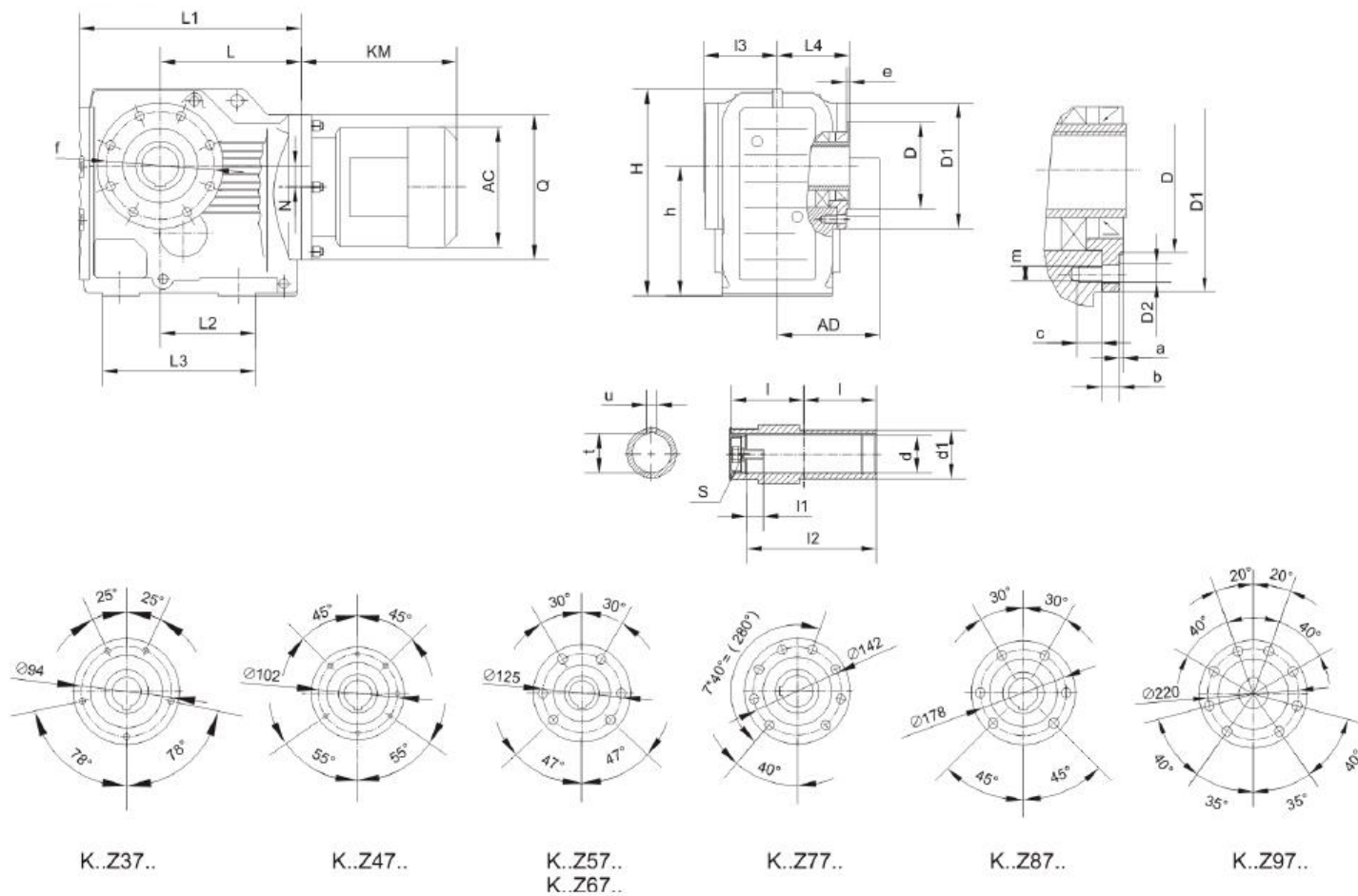


Fig.1

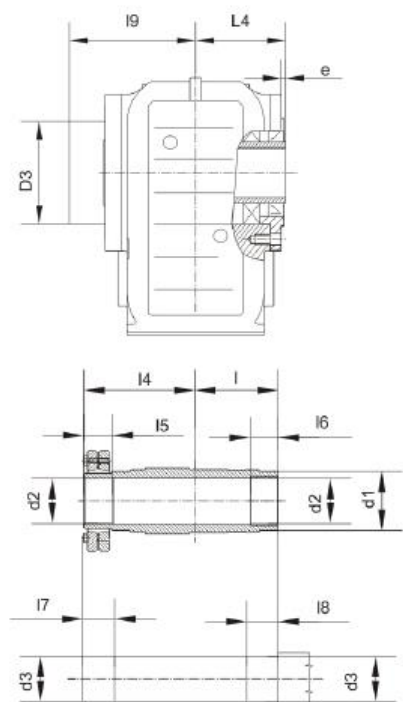
Fig.2



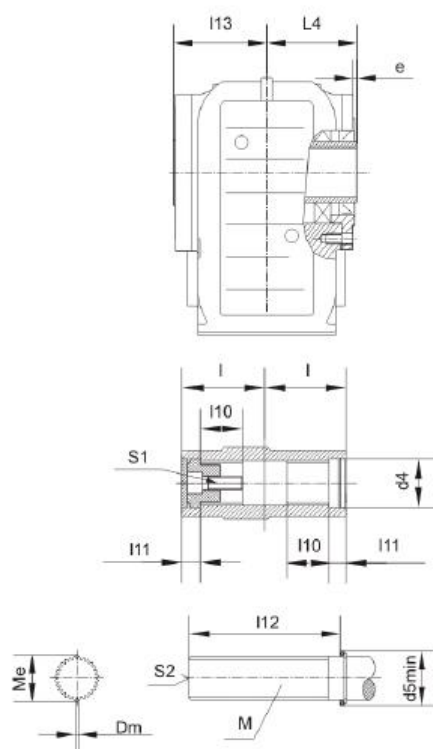
KAZ37..~KAZ157..



KHZ37..~KHZ157..



KVZ37..~KVZ107..



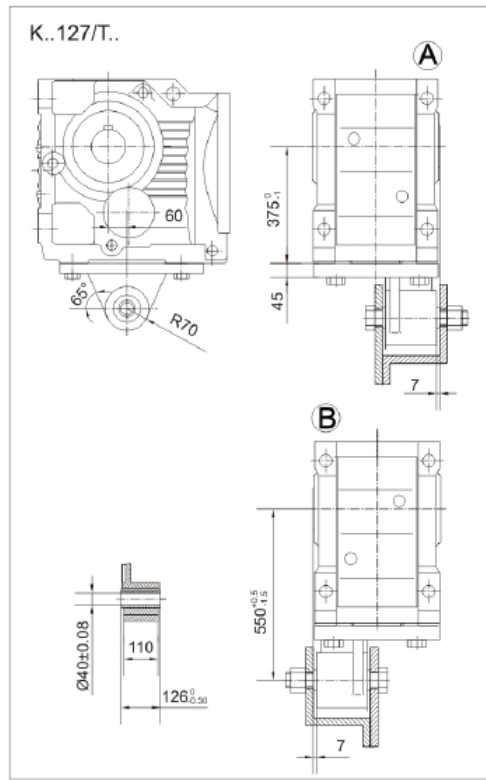
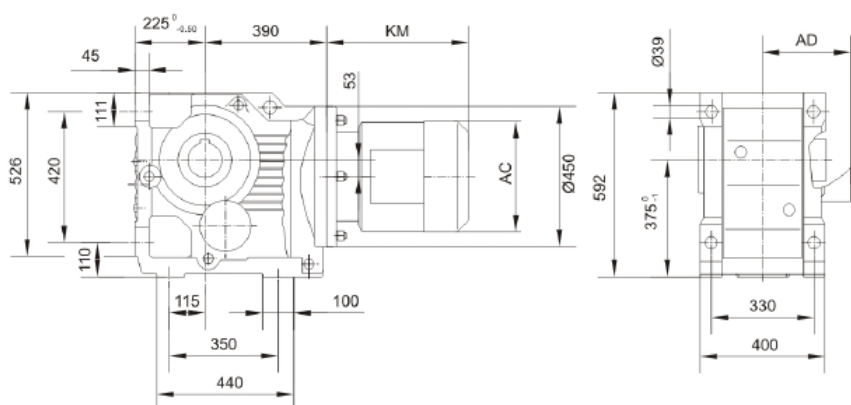
Коническо-цилиндрические мотор-редукторы серии К



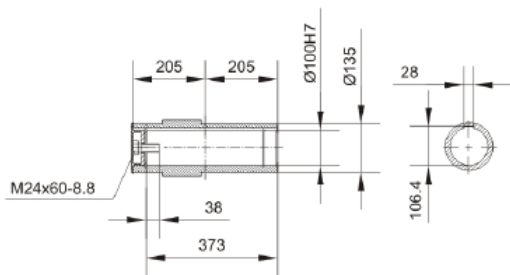
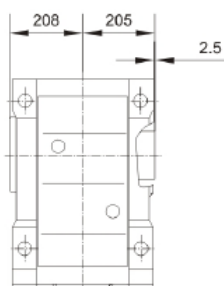
size	a b c	f m e	D D ₁ D ₂	L ₁ L ₂ L ₃	H h Q	L N L ₄	l ₃ l ₉ l ₁₃	hollow shaft dimention			
								I S	l ₁ l ₂	t u	d d ₁
KAZ37.. KHZ37.. KVZ37..	3 11.5 12	94 M8 9	80j6 110 9	210 97 147	164 100 120	139 8.5 60	63 95 62	60 M10×25	17 105	33.3 8	30H7 45
KAZ47.. KHZ47.. KVZ47..	3 11 12	102 M8 8.5	80j6 120 9	243 115 170	185 112 160	166 7.2 75	78 110 77	75 M12×30	22 132	38.3 10	35H7 50
KAZ57.. KHZ57.. KVZ57..	3.5 12 20	125 M12 9	105j6 155 13.5	269 120 182	215 132 160	173 13.1 83	86 117 85	83 M16×40	29 142	43.3 12	40H7 55
KAZ67.. KHZ67.. KVZ67..	3.5 12 20	125 M12 8.5	105j6 155 13.5	274 125 182	226 140 160	179 20 90	94 126 90	90 M16×40	29 156	43.3 12	40H7 55
KAZ77.. KHZ77.. KVZ77..	3.5 14 20	142 M12 10	125j6 170 13.5	312 139 204	286 180 200	202 31.3 105	108 146 105	105 M16×45	32 183	53.8 14	50H7 70
KAZ87.. KHZ87.. KVZ87..	4 15 26	178 M16 11	155j6 215 17.5	390 190 280	338 212 250	257 25.9 120	123 170 120	120 M20×50	36 120	64.4 18	60H7 85
KAZ97.. KHZ97.. KVZ97..	4 18 26	220 M16 14	180j6 260 17.5	435 190 298	414 265 300	277 32.5 150	153 206 150	150 M20×50	34 270	74.9 20	70H7 95
KAZ107.. KHZ107.. KVZ107..	4 22 30	260 M20 8	210j6 304 22	537 230 370	500 315 350	341 52 175	178 245 176	175 M24×60	40 313	95.4 25	90H7 118
KAZ127.. KHZ127.. KVZ127..	5 30 28	300 M20 0	250h6 350 22	615 288 440	592 375 450	390 53 205	208 296 /	205 M24×60	38 373	106.4 28	100H7 135
KAZ157.. KHZ157.. KVZ157..	5 28 36	340 M24 -14	290h6 400 26	706 298 480	705 450 550	426 71.7 250	253 370 /	250 M24×60	36 460	127.4 32	120H7 155

size	D ₃	hollow shaft dimention								
		l ₄ l ₅ l ₆	l ₇ l ₈	d ₂ d ₃	l ₁₀ l ₁₁	l ₁₂	d ₄ d ₅	S ₁ S ₂	D _m M _e	M
KAZ37.. KHZ37.. KVZ37..	75	86 31 20	36 25	30H7 30h6	25 18	85	37 ^{+0.1} 42	M10×30 M10	2.75 33.03 ^{-0.03}	30×1.25×30×22
KAZ47.. KHZ47.. KVZ47..	83	102 32 20	37 25	35H7 35h6	32 18	115	37 ^{+0.1} 42	M10×30 M10	4 38.92 ^{-0.03}	35×2×30×16
KAZ57.. KHZ57.. KVZ57..	83	112 26 20	31 25	40H7 40h6	32 18	130	37 ^{+0.1} 42	M10×30 M10	4 38.92 ^{-0.03}	35×2×30×16
KAZ67.. KHZ67.. KVZ67..	93	118 38 20	43 25	40H7 40h6	42 25	130	47 ^{+0.1} 52	M16×50 M16	4 48.85 ^{-0.03}	45×2×30×21
KAZ77.. KHZ77.. KVZ77..	114	136 36 30	41 35	50H7 50h6	52 23	160	55 ^{+0.1} 62	M16×50 M16	4 54.13 ^{-0.03}	50×2×30×24
KAZ87.. KHZ87.. KVZ87..	159	161 41 40	46 45	65H7 65h6	62 25	180	72 ^{+0.1} 82	M20×60 M20	4 68.96 ^{-0.04}	65×2×30×31
KAZ97.. KHZ97.. KVZ97..	174	195 55 50	60 55	75H7 75h6	72 25	240	72 ^{+0.1} 90	M20×60 M20	4 74.15 ^{-0.04}	70×2×30×34
KAZ107.. KHZ107.. KVZ107..	200	230 65 60	75 70	95H7 95h6	89 26	290	90 ^{+0.1} 105	M20×60 M20	6 90.99 ^{-0.04}	85×3×30×27
KAZ127.. KHZ127..	233	280 85 70	95 80	105H7 105h6	/ /	/	/	/	/	/
KAZ157.. KHZ157..	315	330 90 80	100 90	125H7 125h6	/ /	/	/	/	/	/

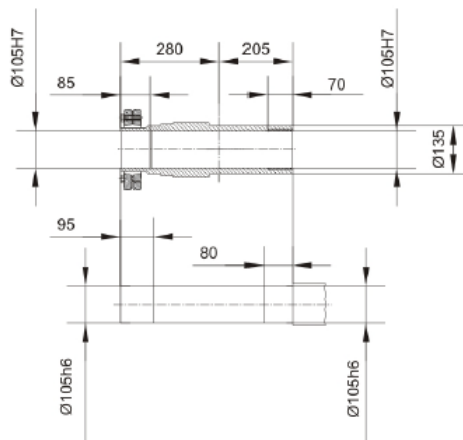
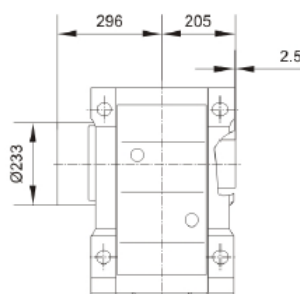
К..127..



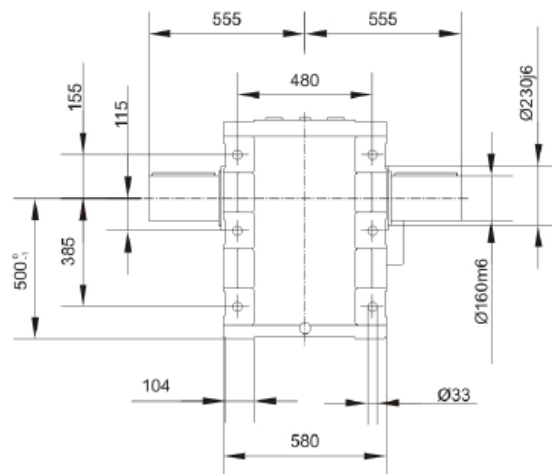
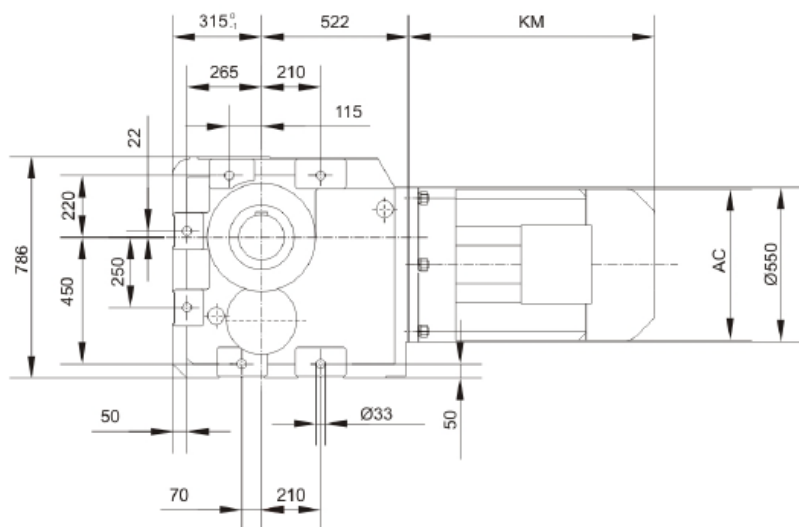
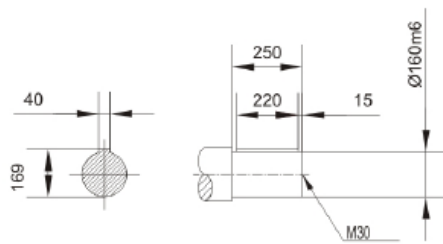
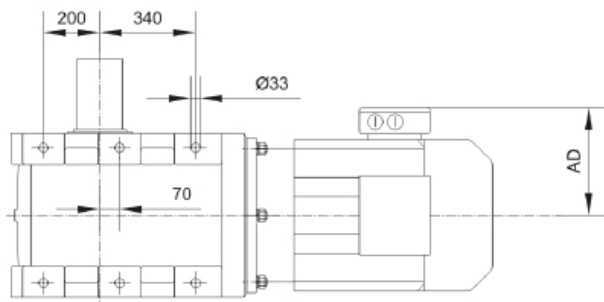
KA127..



KH127..



K167..



K187..

